

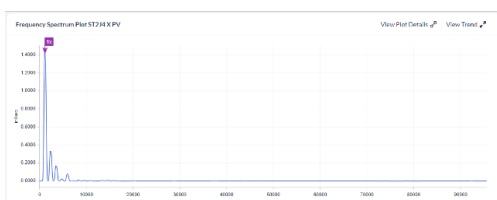
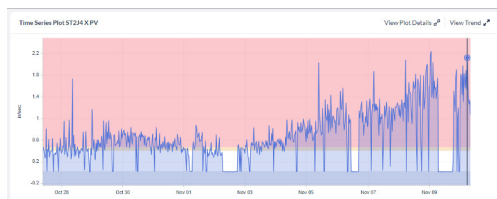
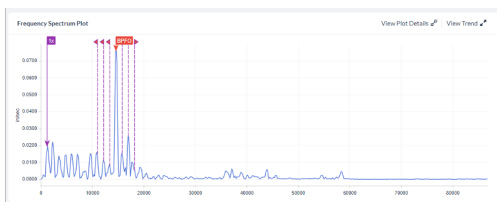
KCF Technologies Asset Case Studies

Strander

It's not enough to simply know that an asset is failing. Our team of engineers, vibration analysts, and industry experts with decades of manufacturing experience use cutting edge predictive maintenance technology to partner with you to solve your asset problems permanently and reach peak performance.

The Problem:

A sequence of monitoring and corrective actions were recorded for a persistent bearing fault in the rolling element outer race. The issue was initially identified on June 13 and consistent monitoring was advised, as the fault persisted post-bearing replacement. A SENTRY Analyst recommended routine maintenance, and highlighted a potential coupling issue. They also proposed exploring alternative bearing types to accommodate higher axial loads. By September, a SENTRY Analyst escalated the situation, advising a critical need for bearing replacement due to increased amplitude readings. They emphasized proper lubrication and suggested vigilant monitoring until the bearing could be serviced.



How We Solved It:

The site scheduled the bearing replacement for November, specifically considering bearings that could better handle axial loading. This proactive measure aimed to mitigate the worsening vibrations on jackshafts three and four. The issue was resolved and the case was on closed on November 22, with a confirmation that the newly installed bearing addressed the assorted faults, including coupling and structural issues. The analyst's updates in January 2023 confirmed the effectiveness of the interventions.

Savings:

\$120,000

Repair and Maintenance

12 hours

Downtime Avoided

Ready to Take the Next Step in Your Machine Health Journey?
Let's Get in Touch.

Email: sales@kcftech.com

Phone: **1 (814) 867-4097 Ext. 1**