

KCF Technologies Asset Case Studies

Digester Outlet Device

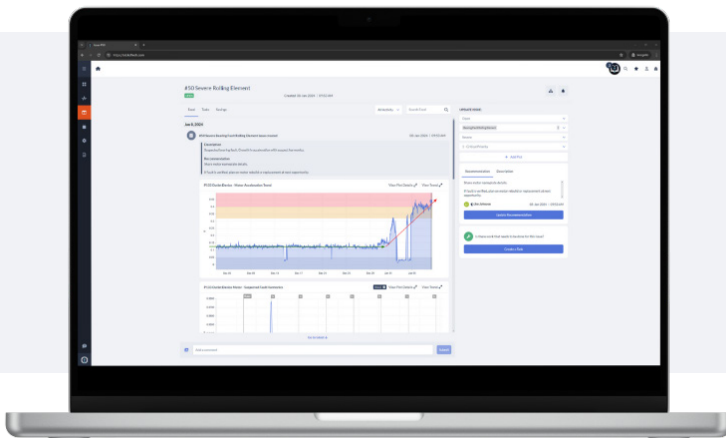
It's not enough to simply know that an asset is failing. Our team of engineers, vibration analysts, and industry experts with decades of manufacturing experience use cutting edge predictive maintenance technology to partner with you to solve your asset problems permanently and reach peak performance.

The Problem:

The motor showed a suspected outlet and bearing driver fault, due to a growth in amplitude with suspected harmonics, and the gear and outlet impacting at 288 RPM.

How We Solved It:

Based on recommendations from KCF's SENTRYsolutions experts and data in SMARTdiagnostics, the motor and outlet bearings were replaced at the next scheduled downtime for the facility.



Ready to Take the Next Step in
Your Machine Health Journey?
Let's Get in Touch.

Email: sales@kcftech.com

Phone: **1 (814) 867-4097 Ext. 1**

Savings:

\$55,000

Customer Savings

5 hours

Downtime Avoided